



# INSTALLATION INSTRUCTIONS

Accessory

19" ALUMINUM WHEEL  
P/N 08W19-TZ5-200

Application

2014 MDX

Publications No.

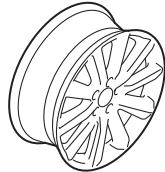
BII 48810

Issue Date

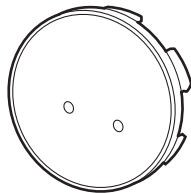
MAY 2013

## PARTS LIST

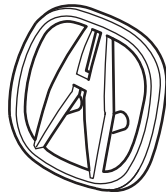
Aluminum wheel  
(The illustration may differ from the actual wheel.)



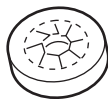
Wheel center cap  
(The illustration may differ from the actual center cap.)



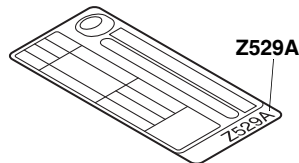
Center cap emblem



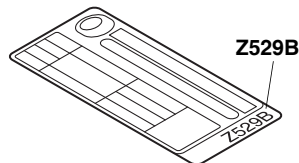
2 Push nuts



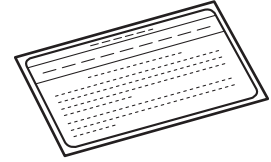
Tire and loading information label A  
(May not used)



Tire and loading information label B  
(May not used)

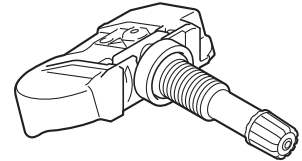


Wheel cleaning information  
(Give this information to your client.)



## Parts for TPMS sensor assembly

Tire pressure sensor assembly



Washer



Valve nut



## TOOLS AND SUPPLIES REQUIRED

- Ratchet
- 11 mm and 19 mm Sockets
- Torque wrench
- Isopropyl alcohol
- Shop towel

## SPECIFICATIONS

Rim size	19 x 8 J (inset 55)	
Tire size	245/55R19 103H	
Bolt hole PCD	114.3 (5 holes)	
Tire pressure	Front	240 kPa (2.4 kgf/cm <sup>2</sup> , 35 psi)
	Rear	240 kPa (2.4 kgf/cm <sup>2</sup> , 35 psi)

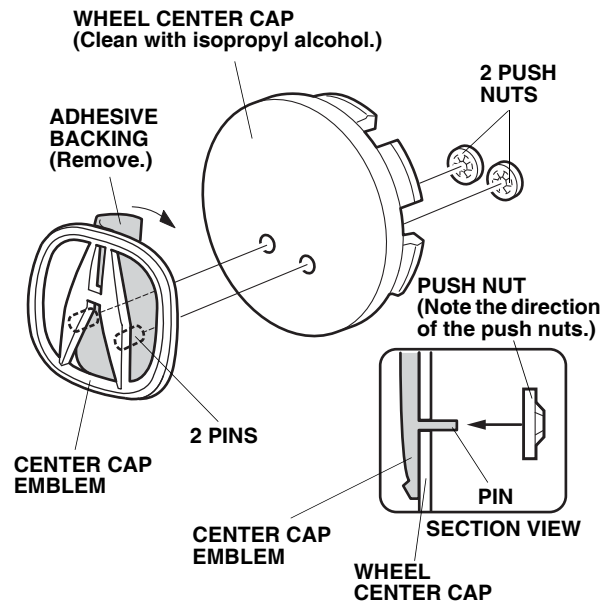
## INSTALLATION

**Client Information:** The information in this installation instruction is intended for use only by skilled technicians who have the proper tools, equipment, and training to correctly and safely add equipment to your vehicle. These procedures should not be attempted by “do-it-yourselfers.”

### NOTE:

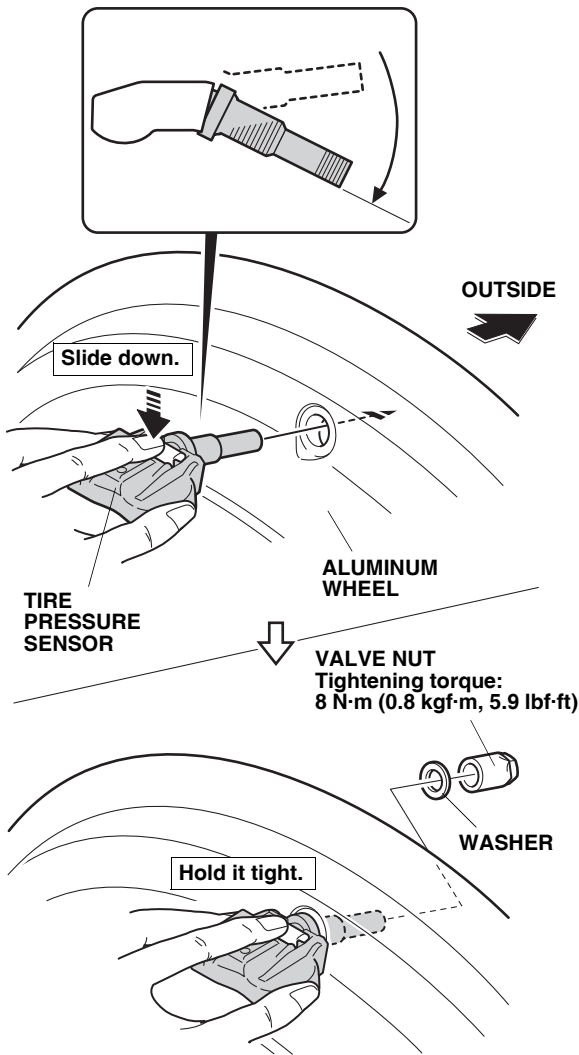
- This aluminum wheel is designed for use on a vehicle equipped with a TPMS (Tire Pressure Monitoring System).
- This aluminum wheel is equipped with a TPMS sensor. See the Service Manual for the tire replacement and TPMS sensor installation procedures.
- The illustrations of the aluminum wheels are shown for reference purposes only.
- Install the correct size tire.
- Follow the instructions in the Owner’s Manual when raising the vehicle, and when removing and installing the wheels. Do not overtighten the wheel nuts. Wheel nut torque: 108 N·m (11 kgf·m, 80 lbf·ft).
- Use a tire changer to install and remove the tires per the directions in the Operation Manual furnished with the tire changer. Do not use a tire lever to install and remove the tires as it may cause damage to the tire and aluminum wheel.
- Be careful not to damage the wheel center cap when installing the center cap emblem.
- This center cap emblem should be installed only if the ambient air temperature is 15°C (60°F) or above.
- To allow the adhesive to cure, do not wash the vehicle for 24 hours. Please advise the client.

1. Using isopropyl alcohol on a shop towel, clean the area where the center cap emblem will attach.



2. Remove the adhesive backing from the center cap emblem.
3. Attach the center cap emblem to the wheel center cap by aligning the pins to the holes on the wheel center cap. Hold the emblem firmly against the wheel center cap with the palm of your hand for 30 seconds.
4. Slide two push nuts to the pins on the center cap emblem. Note the direction of the push nuts.

- Before installing the tire pressure sensor, clean the mating surface on the sensor and the aluminum wheel.

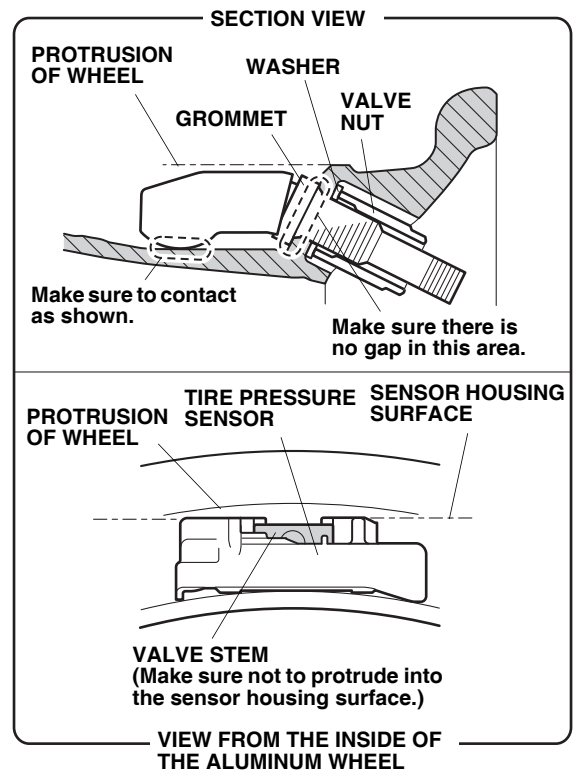


930403AR

- Install the tire pressure sensor and the washer on the aluminum wheel, and tighten the valve nut finger tight. Make sure the pressure sensor is resting on the wheel.
- While holding the tire pressure sensor against the wheel, tighten the valve nut to the specified torque. Tightening torque: 8 N·m (0.8 kgf·m, 5.9 lbf·ft)

**NOTE:**

- Check the grommet on the tire pressure sensor to make sure it is seated properly.
- Make sure the valve stem does not protrude into the sensor housing surface.
- To prevent the sensor housing from getting caught on the bead of the tire, install the tire pressure sensor so that the sensor housing does not protrude into the bead area of the wheel.
- Do not reuse a grommet that had been tightened, even one time, to the specified torque, as it is deformed inside.
- Do not use pneumatic or electric tools on the valve nut.
- Tightening the nut above the specified torque can damage the grommet.



930404BR

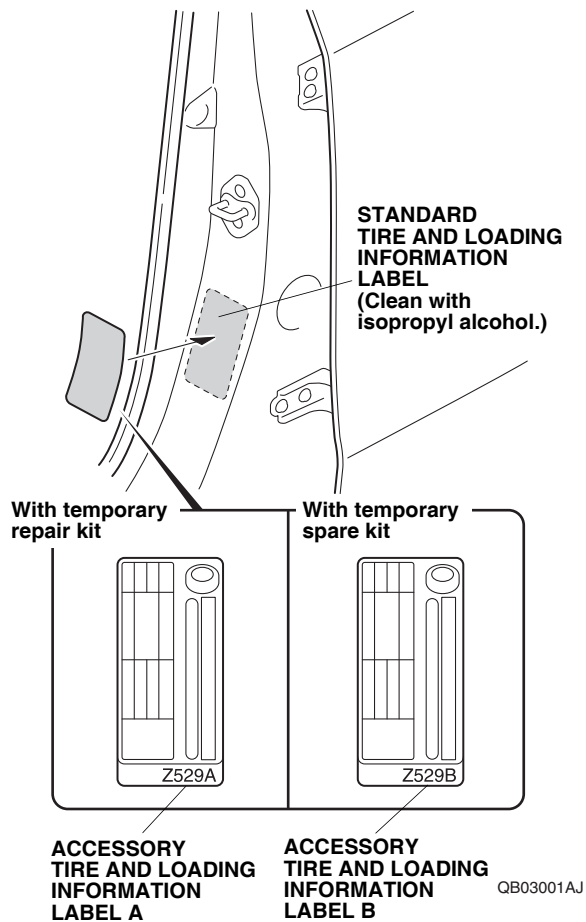
- Install the tires according to the instructions in the Service Manual.
- Install the wheels on the vehicle and torque to 108 N·m (11 kgf·m, 80 lbf·ft).
- Drive the vehicle for at least 40 seconds at a speed of 24 km/h (15 mph) or more, and all sensor IDs will be memorized automatically.

**Models equipped with standard 19" wheels.**

The accessory tire and loading information label is not used.

**Perform step 11 for models not equipped with standard 19" wheels.**

11. Open the driver's door. Using isopropyl alcohol on a shop towel, clean the area where the accessory tire and loading information label will attach. Remove the adhesive backing from the accessory tire and loading information label, and attach it over the standard tire and loading information label to prevent mistake.



**USE AND CARE**

- Use a neutral detergent to clean the wheels.
- Rinse off the neutral detergent promptly after cleaning the wheels.